

The background features a series of vibrant, curved light trails in shades of blue, cyan, orange, and red, creating a sense of motion and energy against a dark blue gradient.

*Light 2*  
RESIDENCES  
EDSA-BONI MRT STATION



## ILLUMINATING THE HEART OF THE CITY

Light 2 Residences offers many strategic location advantages for discerning people like you. It is a few minutes' drive away from the major Central Business Districts, and the international and domestic airports are also within easy reach. For even more convenience, the property has a direct connection to an MRT 3 station.

Centrally located at the heart of the Metro Manila, Light 2 Residences opens doors of opportunities and strategic advantages to its residents.

Spacious, inviting, and thoughtfully-planned, Light 2 Residences provides you with everything you need to create a beautiful home for you and your family.

In addition, an integrated commercial space offers a wide assortment of living necessities right at your fingertips, leaving you free to relax and unwind to your heart's desire.



Light Mall to Light 2 Mall Bridgegeway, Artist's Perspective

## EDSA'S NEWEST AND BRIGHTEST ICON

Located along the Mandaluyong stretch of EDSA, Light 2 Residences is sure to be an iconic landmark that shines brightly along this vital thoroughfare.

The facilities and amenities of Light 2 Residence are designed by ALN, an international landscape architectural firm whose work has garnered awards in several countries. These installation includes a private urban park, created with the purpose of enhancing connections among Light 2 Residence residents, and the community as a whole.

### CBD

- Ortigas (±1.9 km)
- Makati (±5.0 km)
- BGC (±5.9 km)
- Mall of Asia Complex (±10.2 km)
- Triangle Park, Quezon City (±10.8)

### MALLS/SHOPPING CENTERS AND GROCERIES

- Light Mall (±0M)
- Robinsons Forum (±600M)
- Shangrila Plaza (±1.0km)
- Pioneer Center (±1.3 km)
- SM Megamall (±1.3km)

### EDUCATIONAL INSTITUTIONS

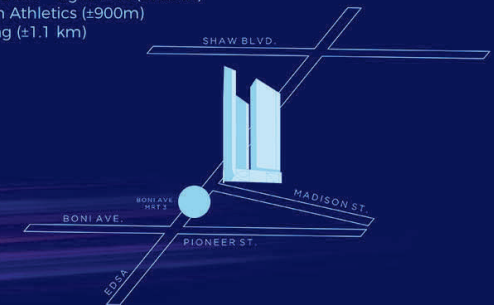
- Rizal technological University (±1.0km)
- Lourdes School of Mandaluyong (±1.3km)
- University of Asia and the Pacific (±1.5km)
- Ateneo School of Medicine and Public Health (±3.7km)
- Jose Rizal University (±4.9 km)
- Don Bosco Technical College (±5.5km)

### HEALTH INSTITUTIONS

- VRP Medical Center (±550M)
- Unciano General Hospital (±1.1 km)
- Mandaluyong Medical Center (±2.2km)
- The Medical City (±3.7km)

### GYM

- Anytime Fitness - Light Mall (±10.0m)
- Gold's Gym Athletics (±900m)
- F45 Training (±1.1 km)





## CREATED TO CULTIVATE CONNECTIONS

With over a hectare of space for play and relaxation, find opportunities to meet, mingle and make new friend. Bond, relax, refresh and unwind to your heart's desire.

### PRIVATE URBAN PARK AMENITIES

- |                                     |                                |
|-------------------------------------|--------------------------------|
| 1. Tower 1 Entry                    | 13. Seating / Function Lounges |
| 2. Tower 2 Entry                    | 14. Shallow Lounge Pool        |
| 3. Adult Pool 28.5M x 19M           | 15. Water Jet Seating          |
| 4. Childrens Leisure pool 16M x 16M | 16. Exercise Zone              |
| 5. The Light House                  | 17. Yoga Area                  |
| 6. Kids Pool 11M x 11M              | 18. Party Lounge               |
| 7. Central Lawn                     | 19. Sun Decks                  |
| 8. BBQ / Sun Lawn                   | 20. Ornamental Planting        |
| 9. Kids Lawn                        | 21. Lockers                    |
| 10. Covered Kids Adventure Zone     | 22. Showers                    |
| 11. Seating Alcoves                 | 23. Family Daybeds             |
| 12. Children's Play Area            | 24. Sculpture On Axis          |
|                                     | 25. Table Tennis Area          |



Light 2 Mall, Artist's Perspective

## SURROUNDED BY LIGHT

Integrated within the property is the newest wing of Light Mall, a deluxe commercial center featuring a wide selection of dining, shopping and entertainment options.

All your shopping, entertainment, and dining essentials can be easily fulfilled in just a few steps.





Amenity Area, Artist's Perspective

## CATCH SOME RAYS

On the weekends, meet up with friends, celebrate with family, host a party.

Dive into relaxation or do laps for exercise at the adult pool. Kids will enjoy splashing around the children's pool, while the shallow pool is the perfect place to catch some rays of the sun.



Amenity Area, Artist's Perspective



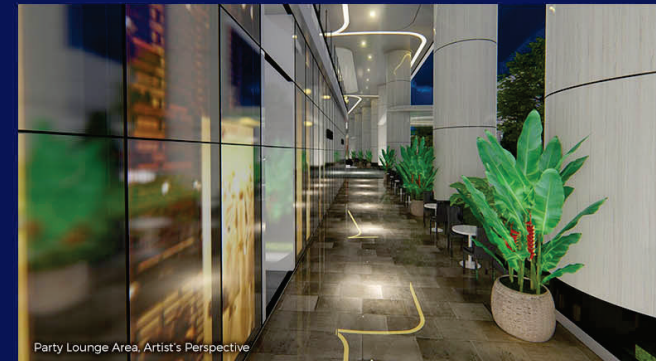
Lounge Area, Artist's Perspective

## CONCEIVED FOR THE COMMUNITY

Inside this development is an exclusive, almost one hectare urban garden designed by ALN, an award-winning, internationally recognized landscape architecture firm. It is a space envisioned to be the center of activity for the community, enhancing connections and fostering a sense of community among Light 2 residents.



Kids Adventure Zone, Artist's Perspective



Party Lounge Area, Artist's Perspective

### About ALN

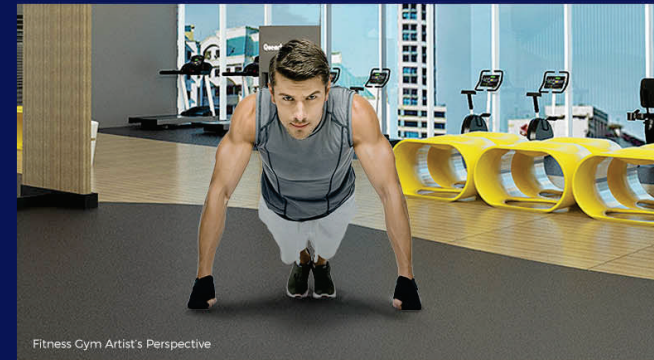
About ALN is a multi-awarded Hong Kong based Landscape Architecture, Urban Design and Masterplanning company with over 22 years' experience serving clients all over South East Asia, China, India and the Middle East. Some of their most notable projects to date include Singapore's Sandcrawler home to Lucasfilm's studios, The Walt Disney Company and ESPN Asia Pacific and Gardens of Hua Wei in Shenzhen.



Fitness Gym Artist's Perspective

## GET STRONGER, GET LIGHTER

Hit the well-furnished gym after office to work off the day's stress. The ample selection of strength training and cardio equipment is ready to help you feel the burn.



Fitness Gym Artist's Perspective





Exercise Zone, Artist's Perspective

## HIGHLIGHT YOUR FLEXIBILITY

At the yoga area, feel free to stretch your body and expand your mind while performing those complex poses before you head off to work.

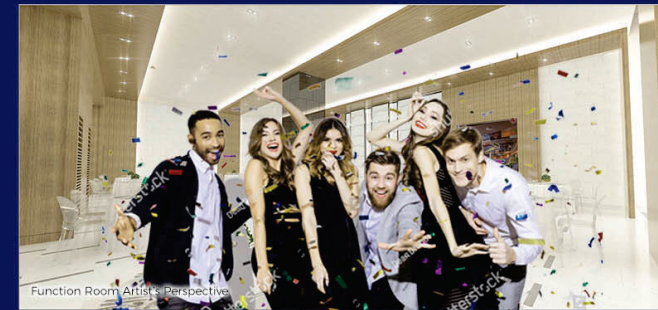




Function Room Artist's Perspective

## LIGHT UP THE NIGHT

The party lounges provide the ideal space to mark life's precious moments, from simple, intimate celebrations to the most elaborately planned occasions.



Function Room Artist's Perspective



Videoke Room. Artist's Perspective

## KEEP IT FUN AND LIGHT

Enjoy the company of your family and friends at our built-in entertainment facilities! The Game Room offers an assortment of table sports and other games for those looking for a little friendly competition, while our KTV Room allows you to sing your favorite songs together to your heart's content.

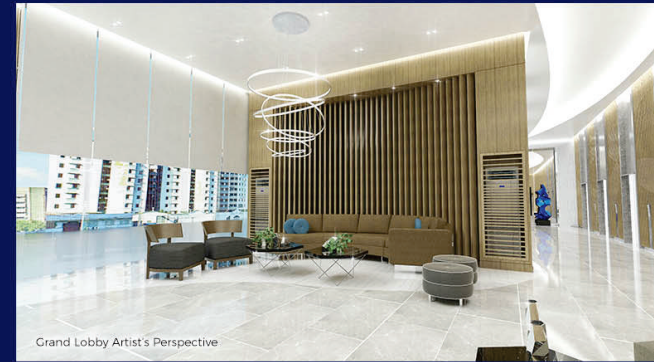




Grand Lobby Artist's Perspective

## ENTER THE SPOTLIGHT

Arrive home in luxury, meet friends and guests at the stunning grand lobby of Light 2 Residences features custom made furnishing amidst the grandeur of marble, wood and intricate display of lights.



Grand Lobby Artist's Perspective



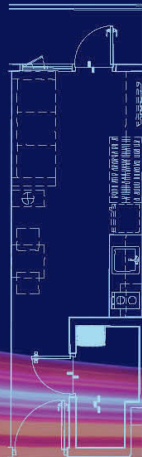
Dressed Up Unit, Artist's Perspective



Dressed Up Unit, Artist's Perspective

## PERSONALIZE YOUR PAD

Residents can design their studio or 1-bedroom unit to suit their desired layout.



Studio with Balcony  
± 20.69sqm



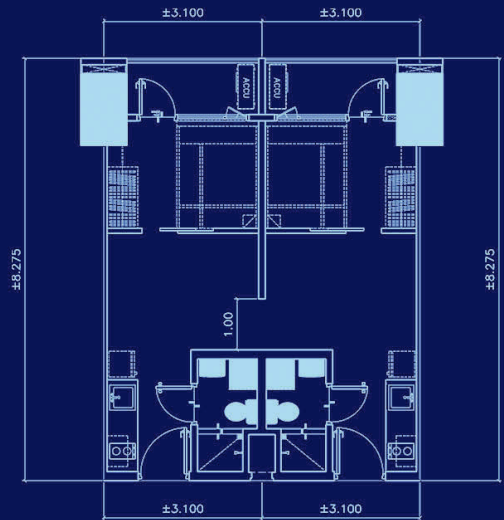
1 Bedroom with Balcony  
± 25.65sqm



Dressed-Up Unit, Artist's Perspective

## LIGHT UP YOUR SPACE

Create a compact, clutter-free home that caters to your urban lifestyle. And to help you do that, feel free to combine units to give you more space to design the unit you've always wanted.



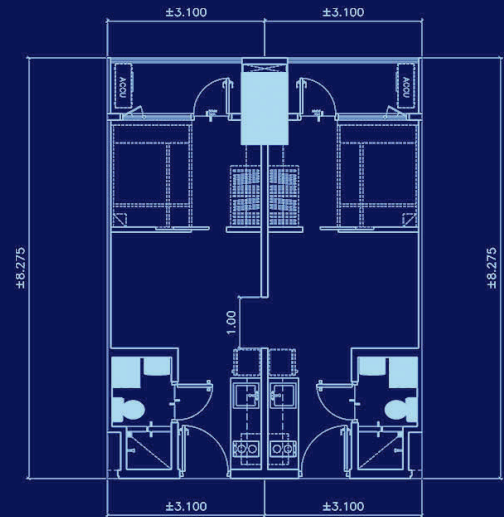
25.65sqm + 25.65sqm

**COMBINED UNIT TYPE - A**



## LIVE THE LIGHT LIFE

Choose from units that provide the space your sophisticated lifestyle demands. Or combine units to obtain a place unlike any other.



25.65sqm + 25.65sqm

**COMBINED UNIT TYPE - B**



## LET OUR PROFESSIONALS LIGHT THE WAY

Our property management team is readily available to assist and address your concern regarding your property.

They are constantly hard at work to ensure that the complex is kept safe and the amenities are well-kept. This way, your property stays a good investment for years to come. Our leasing team is also on hand to help you lease out your property, to enable you to start getting returns on your investment immediately.

In addition, the property has comprehensive CCTV coverage for your peace of mind. A reception desk, doorman and concierge service are also available for your convenience.



The logo for SMDC, consisting of the letters 'SMDC' in a bold, white, sans-serif font, centered within a light blue rectangular box.

**SMDC**



(02) 858-0300 • 0917-500-5151  
[www.smdc.com](http://www.smdc.com)  
TheOfficialSMDC

HLURB LS No. 035119  
Location: EDSA corner Madison St., Brgy. Barangka Ilaya, Mandaluyong City  
Completion Date: September 30, 2024  
Developer: 102 E. Delos Santos Realty Co., Inc.