



S A I L

R E S I D E N C E S



AN OCEAN OF LUXURY AWAITS

Welcome to Sail Residences, the treasure of the Mall of Asia district. Explore a vast wealth of shops, restaurants, and entertainment spots as endless as the horizon beyond Manila Bay. It's truly a home worthy of the most remarkable individuals, couples, and families.



BUILDING FACADE, ARTIST'S PERSEPECTIVE

BORDERED BY BRILLIANCE

Sail Residences is just a few minutes away from SM Mall of Asia itself, the 4th largest shopping mall in Asia. The location is also a hub of activity, with offices, commercial centers, and entertainment options all within quick reach. The entire area is bordered by Manila Bay, which can be perfectly viewed from Sail Residences' Garden View Deck.

Commercial Areas

- SM Mall of Asia (0.51km)
- SM by the Bay (0.81km)
- S Maison (0.87km)
- Harbor Square (0.87km)
- Blue Bay Walk (0.38km)
- Double Dragon Plaza (0.50km)

Entertainment

- Mall Of Asia Arena (0.64km)
- Dream Play (1.54km)
- Dessert Museum (0.93km)
- Galeon Museum (0.64km)
- Star City (2.09km)

Event/Convention Centers

- SMX Convention Center (0.78km)
- One Esplanade (0.63km)
- World Trade Center (1.50km)
- Cultural Center of the Philippines (2.30km)
- Philippine International Convention Center (1.90km)
- City of Dreams Manila (1.60km)
- Solaire Resort and Casino City of Dreams (1.64km)
- Okada (2.46km)

Hotels

- Tryp Hotel (0.63km)
- Conrad Hotel (0.87km)
- Hyatt Regency Hotel Manila (1.60km)
- City of Dreams (1.60km)
- Nobu Hotel (1.60km)
- Sofitel (1.82km)

Leisure

- Manila Yacht Club (2.73km)

Offices

- E-Com Centers (0.55km)
- SM Corporate Offices (0.14km)




DESIGNED TO MAKE WAVES

Sail's design takes inspiration from international seaside resorts and luxurious waterfront homes. Its colors run the range of the sandy whites and browns of beaches to the many shades of ocean blue. Its architecture and elements follow the theme, incorporating the fluid shapes and curves of waves. All these design choices come together to give you the unique feeling of relaxation as only the ocean can.




 Tranquil Terrace

 Kid's Play Port

 Pacific Park

 Deluxe Jacuzzi

 Kiddie Lagoon

 Cabanas

 Serenity Pool

 Tropical Clubhouse



CALM WATERS

Lounge at your pleasure at the relaxing pool areas, go for a swim after a long day, or take a leisurely stroll along the Pacific Park. Here, the ocean-themed furnishings and amenities aim to bring the luxury cruise atmosphere closer to home. Nearby, you'll find cabanas suited for more intimate celebrations and meetings.

SET YOUR COURSE

The Balinese-inspired clubhouse at the center of the pool area offers a delightful venue for community events as well as personal engagements. Atop it, you'll find a fully-equipped gym including a Cross-Fit area, perfect for strengthening both mind and body.





Stock Photo

YOUR PERSONAL PORT

Sail Residences houses its own commercial area with a host of quality concessionaires and restaurants to suit your discerning tastes.



GRAND LOBBY, ARTIST'S PERSPECTIVE

WELCOME ABOARD

The expansive lobby is decorated with fixtures and furniture mimicking the soothing motion of waves. Spacious and charming, the lobby is a wonderful place to come greet visitors, spend time in, or simply pass by.



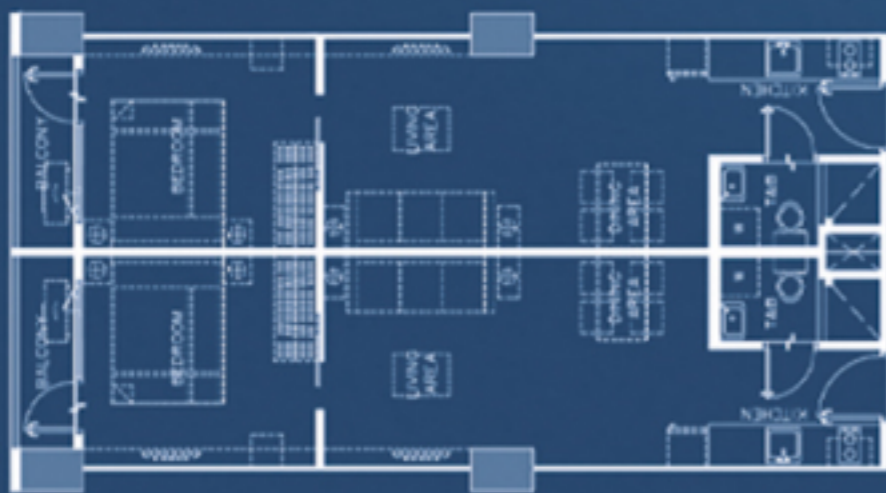
GRAND LOBBY, ARTIST'S PERSPECTIVE



GRAND LOBBY, ARTIST'S PERSPECTIVE



DRESSED UP UNIT, ARTIST'S PERSPECTIVE



1 BEDROOM UNIT
W/ BALCONY
38.75 SQM.

1 BEDROOM UNIT
W/ BALCONY
38.75 SQM.

LUXURY QUARTERS

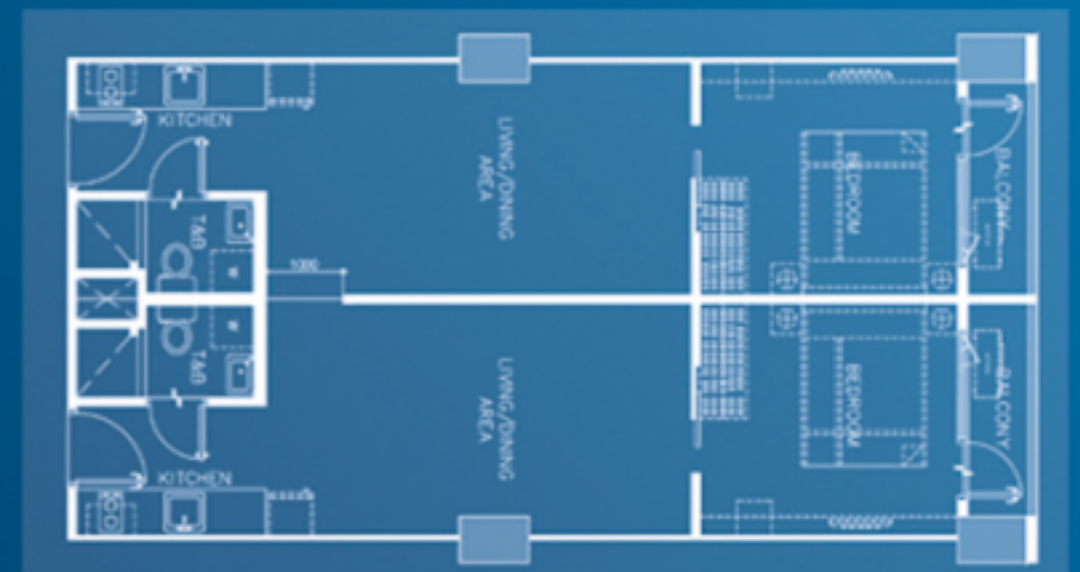
Make the most out of your luxurious living space
by designing it however your heart desires.



DRESSED UP UNIT, ARTIST'S PERSPECTIVE

SAFE HARBOR

Secure your growing family a deluxe space that they deserve. Revamp your living space to fit your needs by combining units.



COMBINED LAYOUT
77.50 SQM.



OUR CREW IS READY FOR YOU



Our property management team is readily available to assist you and address any concerns you may have. They are constantly hard at work, ensuring that the development and the amenities are secure and well-kept. This way, the property stays a good investment for you and your family for years to come. The team is also on-hand to help you lease out your unit should you desire immediate return of investment. In addition, our 24-hour security team is always on-duty for your safety and convenience.



SMDC
PREMIER

(02) 858-0300 • 0917-500-5151

www.smdc.com

    The OfficialSMDC

HLURB LTS No. 034568 | HLURB AA-XXXX/XX-XXXX
Sunrise Drive, CBP1A, Mall of Asia Complex, Pasay City
Completion Date: May 31, 2023
Developer: SM Prime Holdings, Inc.