

SMDC

CHEERFUL HOMES 2

MABALACAT CITY, PAMPANGA

Full of life. Full of fun.

SMDC Homes bring fulfillment to Filipino families who dream of owning a modern house and lot in a master-planned community that is safe, convenient, and sustainable.



Full of life. Full of fun.

Life is livelier and brighter when you live in SMDC Cheerful Homes: a 17-hectare, master-planned community with spaces that are designed to fit the modern Filipino lifestyle.



MODEL UNIT, ARTIST'S PERSPECTIVE

A Fitting Life

Situated near NLEX, transport terminals, and impressive educational institutions, this definitely is a place where you can lead a fulfilling and happy life.



A Brighter Life

You won't have to worry about getting your child in a great school with various prestigious colleges and universities near your home.



Salem Sukuru Training Center - 1 km

Nehemiah Christian School - 3.5 kms

Children of Fatima School of Mabalacat Inc. - 3.9 kms

Don Bosco Academy - 4.6 kms

Holy Angel University, Angeles - 4.7 kms

Cedar Hall Academy - 5.0 kms

Great Shepherd Christian Academy - 5.7 kms

Shield of Victory Christian School - 6.5 kms

Our Lady of the Holy Rosary of Pompei School - 6.6 kms

Mabalacat Christian Academy - 7.9 kms

Jose Feliciano College Dau - 9.4 kms

UP Diliman Pampanga Extension Program, Angeles - 9.6 kms



A Healthful Life

Take care of your family's health and wellness easily with nearby hospitals you can regularly visit when you reside at SMDC Cheerful Homes.

Tiglao Medical Center Foundation - 4.5 kms

Mabalacat District Hospital - 7.2 kms

St. Raphael Medical Center - 7.3 kms

Mayor Armando P. Quioc Memorial Birthing Home - 9.9 kms

Our Lady of Mt. Carmel Medical Center, Clark - 10.6 kms

Dr. Andres Soriano District Hospital - 10.7 kms

A Leisurely Life

Apart from its very own Cheerful Mall, SMDC Cheerful Homes is also only a 15-minute ride away from exciting family adventures at SM City Clark.



An Exciting Life

At SMDC Cheerful Homes 2, you'll always be ready for your next journey with the convenience of living only 20 minutes away from Clark International Airport!



Welcome to SMDC Cheerful Homes:
a master-planned community that brings a whole
new level of gleeful fun to you and your family!



GATE AND GUARD HOUSE, ARTIST'S PERSPECTIVE

SMDC

CHEERFUL HOMES 2

MABALACAT CITY, PAMPANGA

SITE DEVELOPMENT PLAN



LEGEND:

- RESIDENTIAL - INNER UNIT
- RESIDENTIAL - END UNIT
- RESIDENTIAL - CORNER UNIT
- SHOPHOUSE - END UNIT
- SHOPHOUSE - CORNER UNIT



An Easy Life

With its very own community mall within the development, entertainment will be more convenient for everyone!

A Blissful Life

Life at SMDC Cheerful Homes is always fun
with various activities you can choose from.



A Harmonious Life

Live in a community where all the places you need to go to are strategically placed for your ease and advantage.



AMENITIES

- 1 Clubhouse
- 2 Lap Pool
- 3 Kiddie Pool
- 4 Children's Play Area
- 5 Cheerful Park
- 6 Lawn
- 7 Covered Basketball Court
- 8 Project Management Office (PMO)



LAP POOL, ARTIST'S PERSPECTIVE

A Delightful Life

Dive into delight when you spend your weekends hanging around the pool that's available for you and your family.



PAVILION, ARTIST'S PERSPECTIVE

A Refreshing Life

Don't feel like dipping in the pool? Lounge around the gazebo and spend a relaxing day reading a good book or simply enjoying the moment.



CHEERFUL PARK, ARTIST'S PERSPECTIVE

A Happy Life

Spend more time in nature at the Cheerful Park where you can stroll, relax, and play with your loved ones.



CHILDREN'S PLAY AREA, ARTIST'S PERSPECTIVE

A Playful Life

When life calls for more enjoyment, SMDC Cheerful Homes has play areas that are fit for fun-filled family activities.



COVERED BASKETBALL COURT, ARTIST'S PERSPECTIVE

An Active Life

If you need to break a sweat, go shoot some hoops in the covered court and conveniently cross "exercise" out of your to-do list.



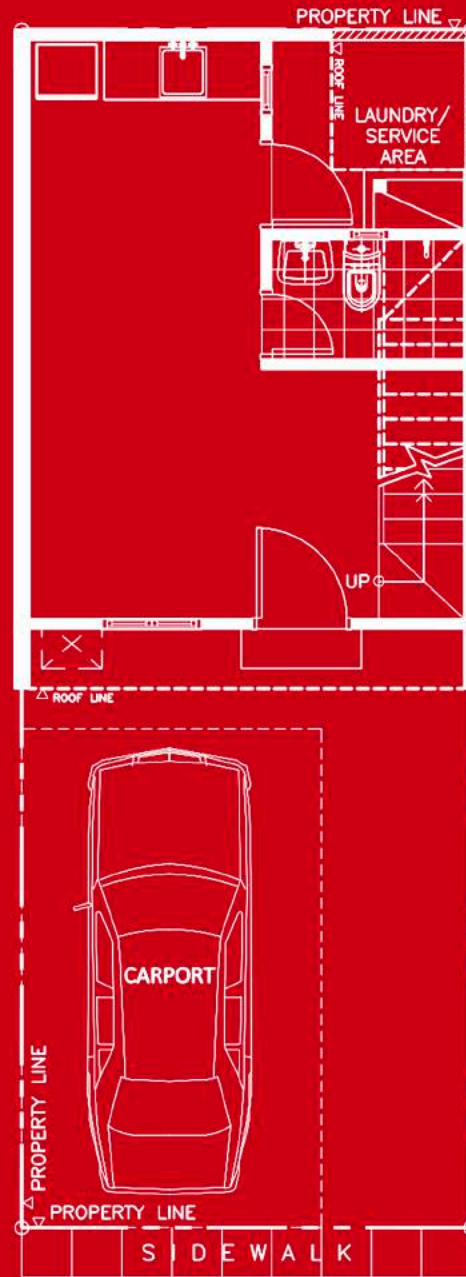
MODEL UNIT, ARTIST'S PERSPECTIVE

A Flexible Life

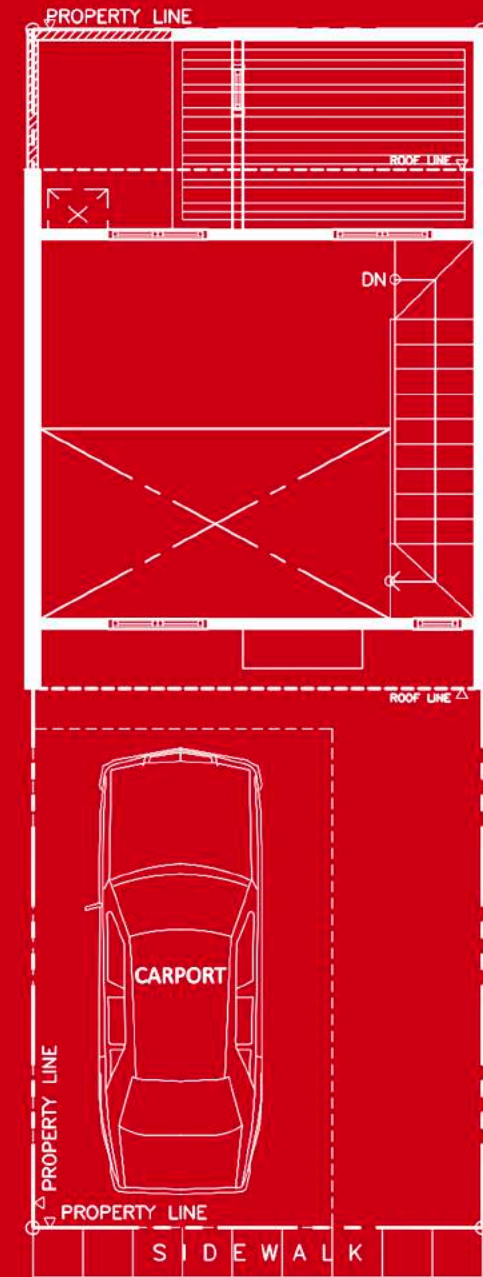
A home that adapts to your changing needs? Now that's something to be cheerful for! Choose from different housing formats that you can easily design depending on your lifestyle.

Loft Type Inner Unit

Average Lot Area: 54 sqm
Floor Area: 32 sqm



GROUND FLOOR



SECOND FLOOR



INNER UNIT: LIVING AREA, ARTIST'S PERSPECTIVE



INNER UNIT: LIVING AREA, ARTIST'S PERSPECTIVE



INNER UNIT: KITCHEN AND DINING AREA, ARTIST'S PERSPECTIVE



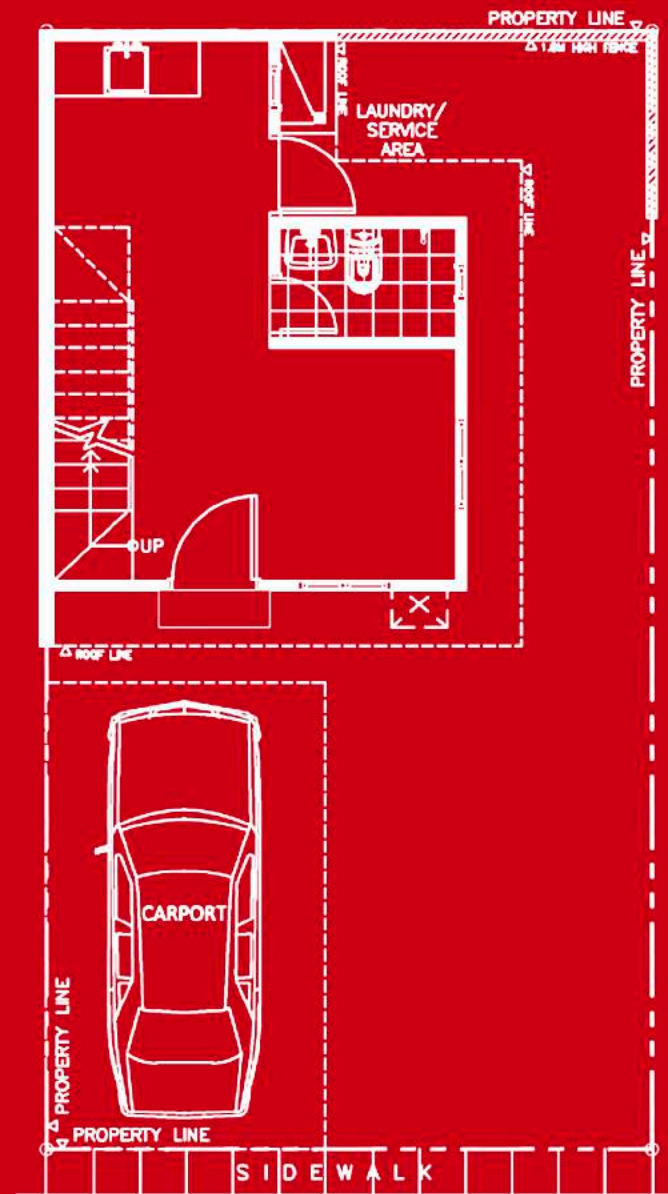
INNER UNIT: BEDROOM, ARTIST'S PERSPECTIVE



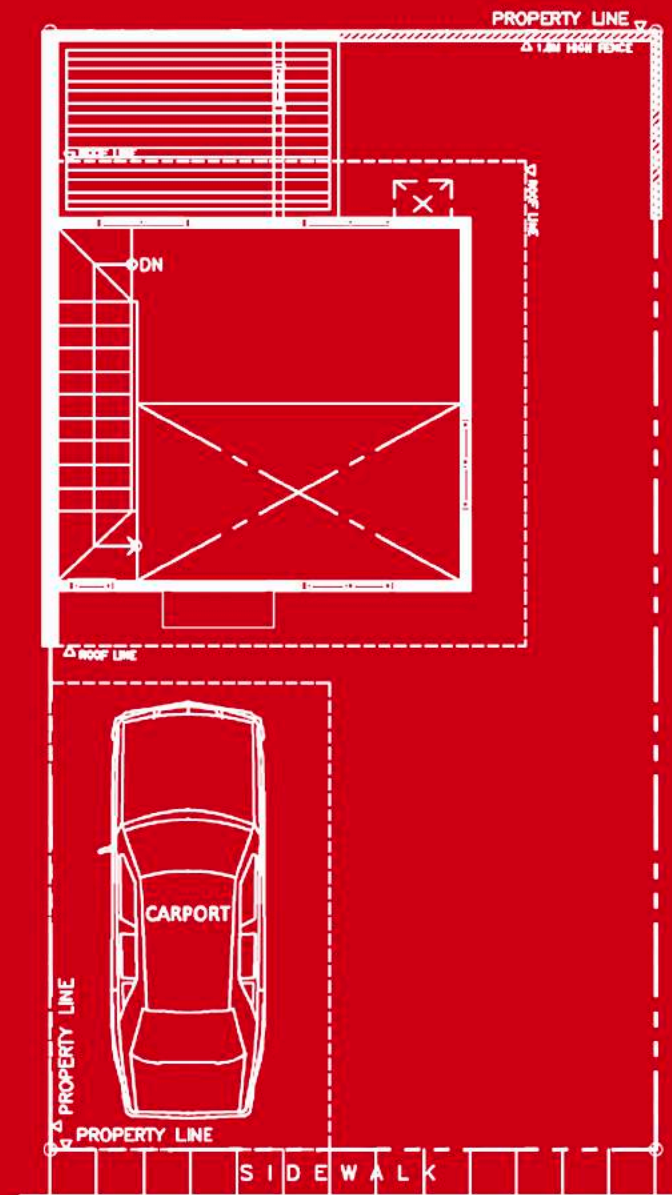
INNER UNIT: BATHROOM, ARTIST'S PERSPECTIVE

Loft Type End Unit

Average Lot Area: 78 sqm
Floor Area: 32 sqm



GROUND FLOOR



SECOND FLOOR



END UNIT: LIVING AND DINING AREA, ARTIST'S PERSPECTIVE



END UNIT: LIVING AREA, ARTIST'S PERSPECTIVE



END UNIT: KITCHEN AND DINING AREA, ARTIST'S PERSPECTIVE



END UNIT: BEDROOM, ARTIST'S PERSPECTIVE



END UNIT: BATHROOM, ARTIST'S PERSPECTIVE



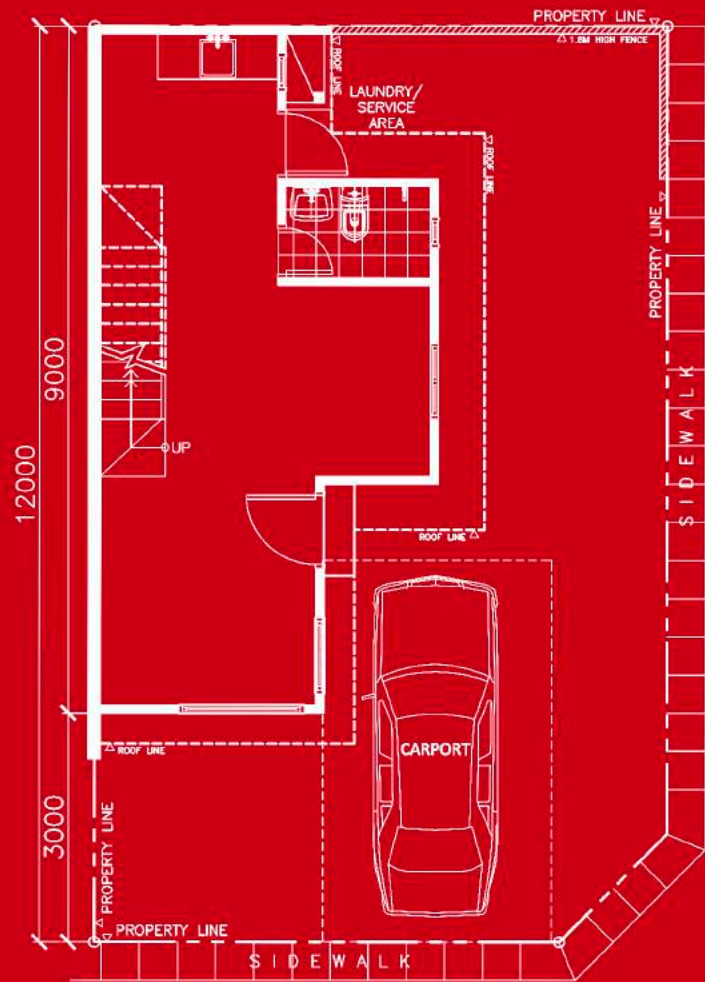
SHOPHOUSE MODEL, ARTIST'S PERSPECTIVE

A Bountiful Life

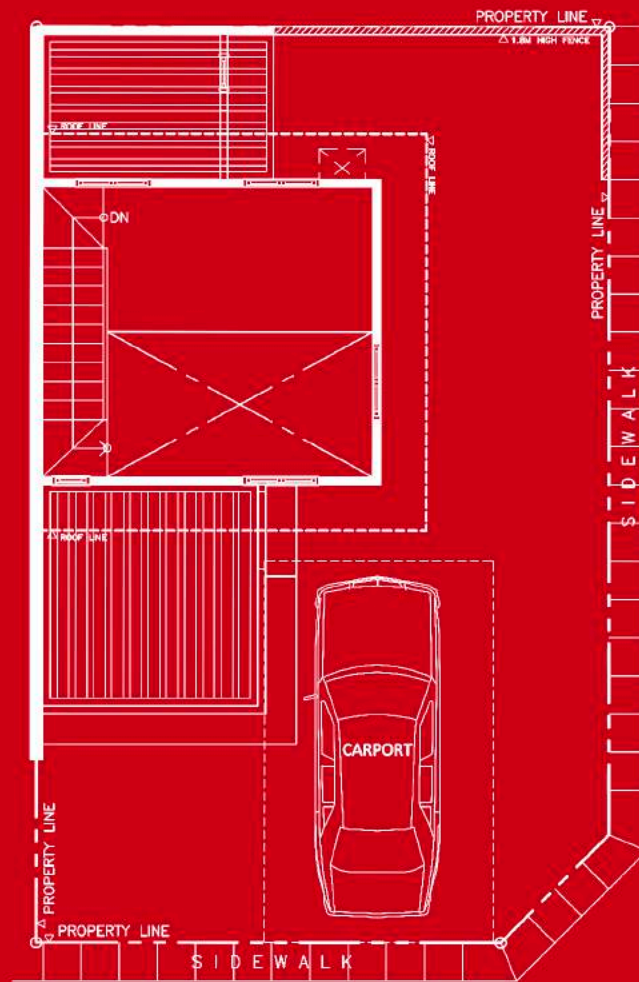
Life gets more exciting when you can play and work at the same time! Strategically positioned in selected corner lots in the community, the shophouse unit is ideal for entrepreneurial residents who provide some of the neighborhood's immediate needs.

Shophouse Corner Unit

Average Lot Area: 90 sqm
Floor Area: 41 sqm



GROUND FLOOR



SECOND FLOOR



MODEL UNIT, ARTIST'S PERSPECTIVE

A Safe and Secure Life

Greenmist Property Management Corporation ensures the first-rate upkeep, protection, and management of the property so homeowners can maximize their investments. For investors thinking of renting out their homes, SMDC offers hassle-free leasing services through Prime Key Leasing.

SMDC

www.smdc.com



DHSUD LTS No. 2021-05-227 / HLURB ENCRFO AA XXXX-XX-XXXX
Brgy. Sta. Maria, Mabalacat City, Pampanga.
Completion Date: December 2023
Developer: SM Development Corp.