



# AZZ

RESIDENCES  
Bel-Air, Makati

The logo for SMDC, consisting of the letters 'SMDC' in a bold, red, sans-serif font, centered within a bright yellow rectangular background.

# SMDC

*The good guys!*

Every single day, SM touches the lives of millions of people through its stores, malls, banks, hotels and leisure facilities. And now, Filipinos can live in style, comfort and convenience at SM Development Corporation (SMDC).

SMDC commits itself to provide access to luxurious urban living through vertical villages perfectly integrated with a commercial retail environment, giving its residents a truly cosmopolitan lifestyle.

SMDC developments are strategically situated in key areas across Metro Manila specifically the Central Business Districts of Makati, Ortigas, Quezon City, Pasay and Parañaque.

**AZZ**  
RESIDENCES



*Live and breathe Makati.*



Dawn breaks and a metropolis comes to life. Welcome to The Financial Capital of the Philippines.  
Welcome to Makati.

**AZZ**  
RESIDENCES

*Experience Makati.*



Work



Play



Learn



Earn



The finest shops and restaurants.  
Prestigious business addresses.  
Elegant hotels and shopping malls.  
It all comes together here.





## *Artists' Hub*

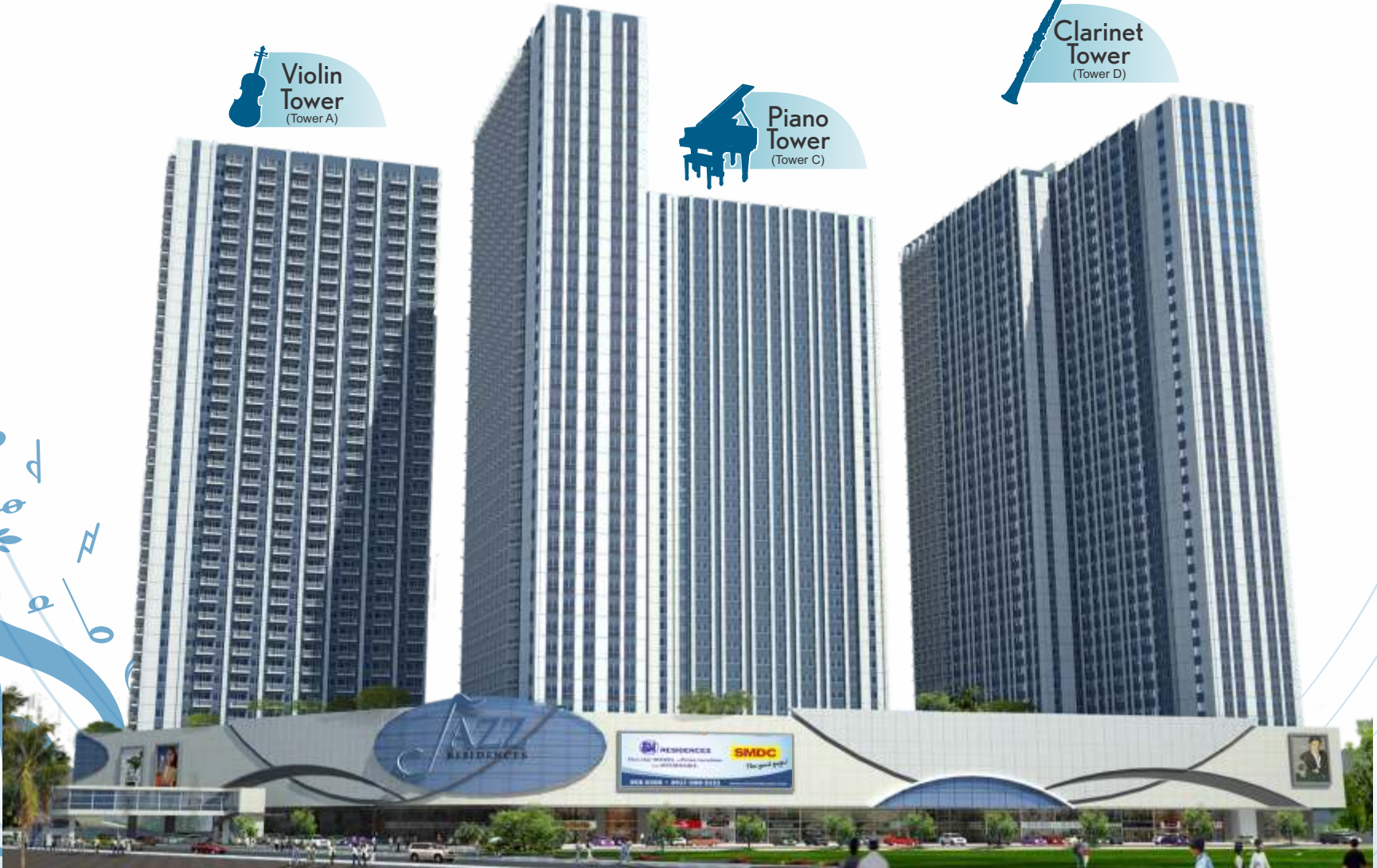
Discover the cultural hub that is Nicanor Garcia (Reposo) Street.

An assembly of artists' ateliers,  
specialty shops and eclectic restaurants.



# JAZZ RESIDENCES





## Building Facade



# Vicinity Map

Strategically located at the corner of Nicanor Garcia Street and Metropolitan Avenue in Bel-Air.

## Legend:

-  Church
-  Schools
-  Hospital
-  MRT Station







*Rising storeys just across the CBD  
... My own vertical village*



**7th to 46th Floors**

- Penthouse & Residential Units

**6th Floor**

- Amenity Deck & Selected Residential Garden Units

**3rd to 5th Floors**

- Parking Area

**2nd Floor**

- BPO / Call Center Office
- Parking for Residential / Commercial
- Entrance to Bridgeway to Salcedo Village

**Ground Floor**

- Jazz Mall w/ SM Hypermarket and Retail Shops
- Residential Lobbies

**Basement**

- Parking for Residential / Commercial



*Keep fit while getting to the office*



Take a walk via the  
Jazz elevated walkway  
to the Makati CBD.





Leave the worries of  
the urban jungle at the door.

Jazz's inviting lobby is the gateway  
to your private sanctuary.







*Enter the Vertical Village where everything is just an elevator ride away. Lounge around the pool deck or take a rejuvenating dive into one of the pools.*



Artist Rendition of Amenity Area



## *Facilities & Services*

- Round-the-clock security that allows you to feel safe and secure 24/7
- Appropriate back-up power system
- Fire alarm and sprinkler system
- Centralized mail room system
- Centralized garbage collection and disposal system through property management
- State-of-the-art, high-speed elevators that will lead you to the luxurious amenities and your residential units.





*... Have your own piece of Makati.*

Imagine living here.

Short commute to and from work  
means more time to recharge your body and to soothe your mind.

Live, work and play. Do it all here.

Own a piece of luxury in your favorite city.





dining



living room



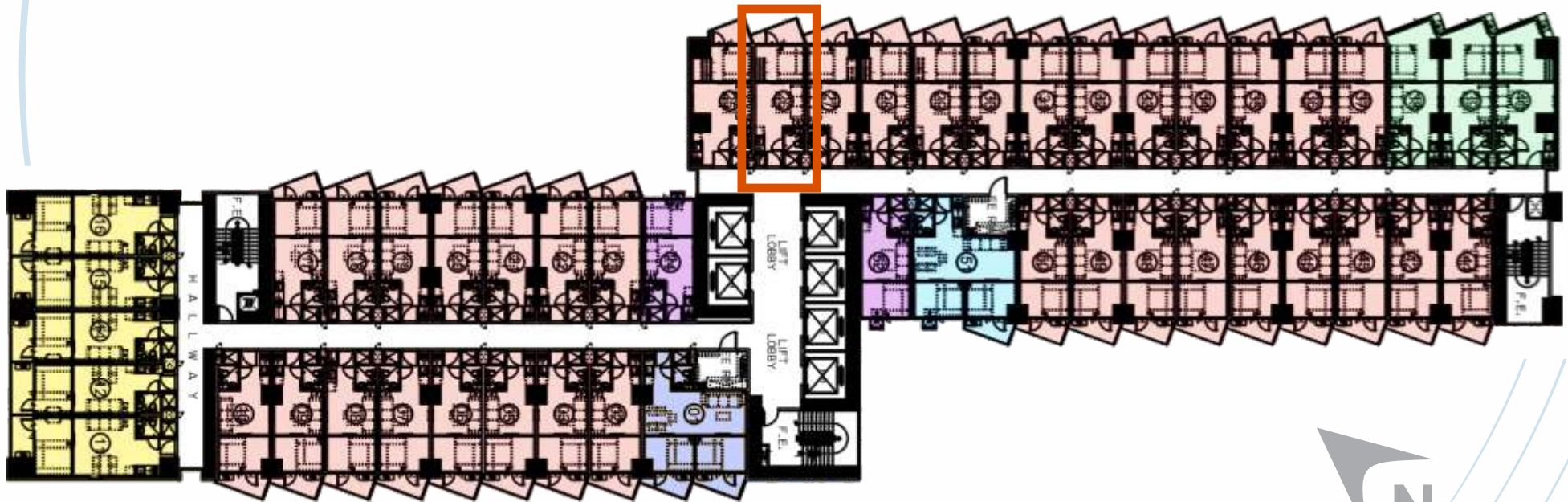
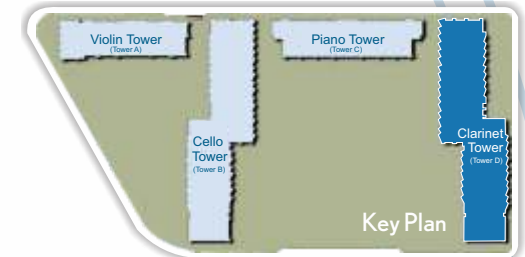
bedroom



kitchen



# Clarinet Tower (Tower D)



**LEGEND:**

- 1-Bedroom Unit with Balcony A
- 1-Bedroom Unit with Balcony B
- 1-Bedroom Unit A
- 1-Bedroom Unit B
- 2-Bedroom Unit A
- 2-Bedroom Unit B

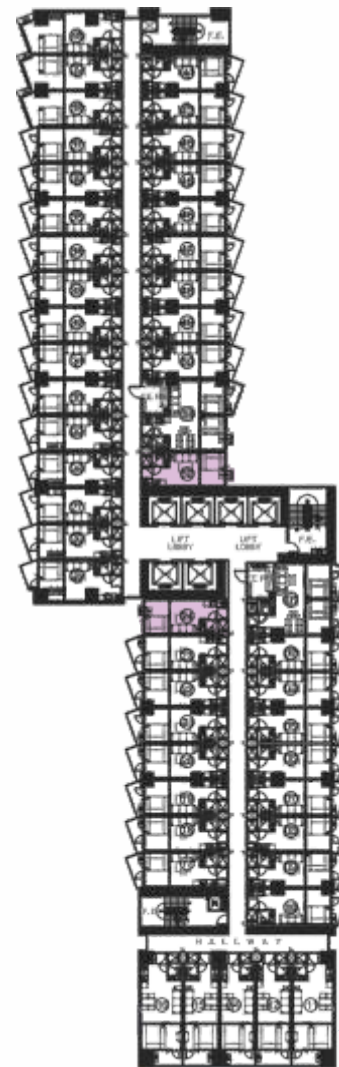
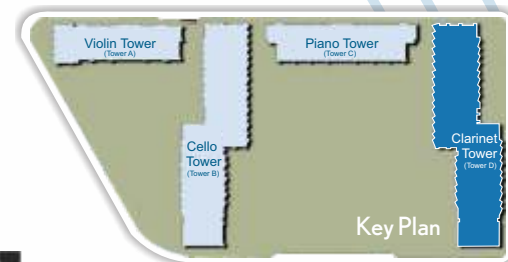
Typical Floor Plan



1-Bedroom Unit A  
23.84 sqm. / 256.61 sqft.



Unit Components:  
Bedroom • Living / Dining Area • Kitchen • Toilet & Bath

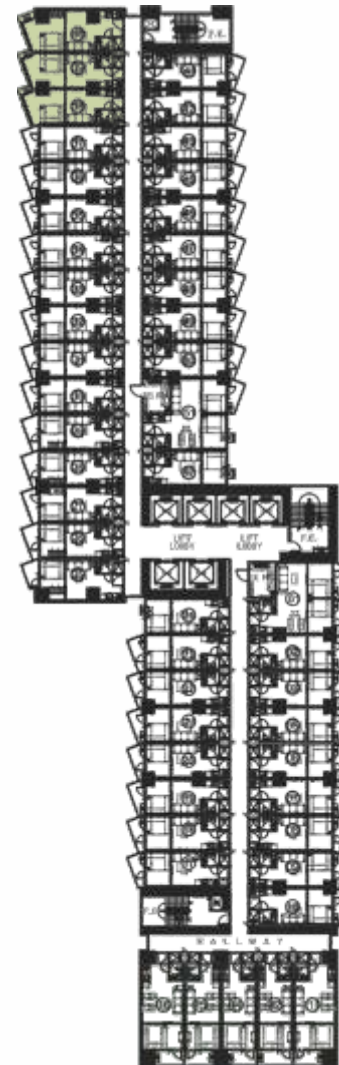




1-Bedroom End Unit B  
26.81 sqm. / 288.58 sqft.



Unit Components:  
Bedroom • Living / Dining Area • Kitchen • Toilet & Bath

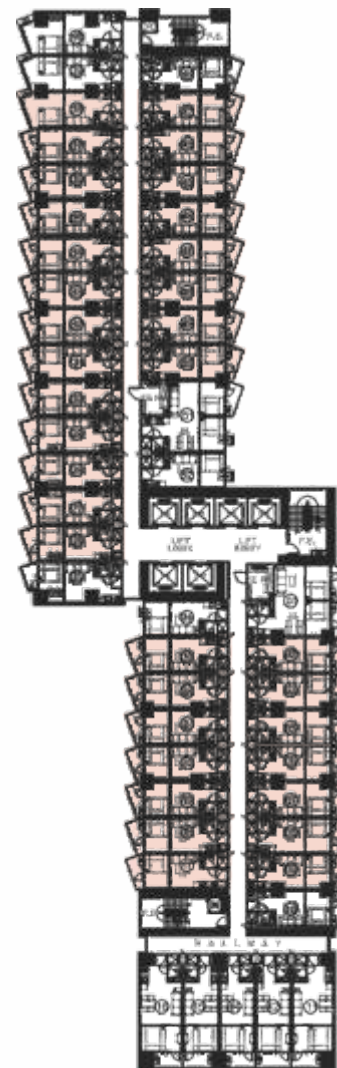
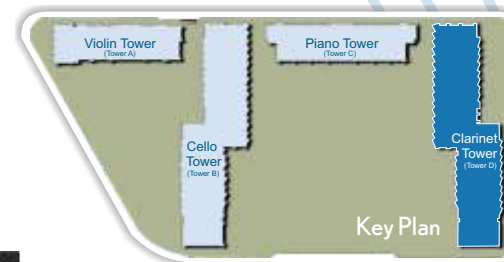




1-Bedroom Unit with Balcony A  
26.81 sqm. / 288.58 sqft.



Unit Components:  
Bedroom • Living / Dining Area • Kitchen • Toilet & Bath

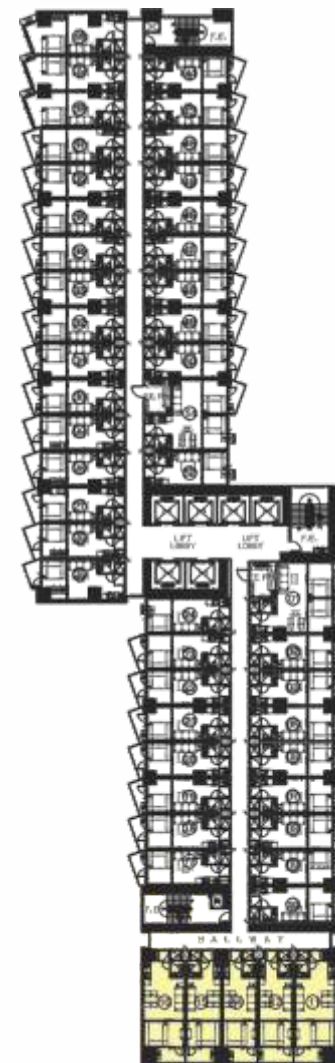
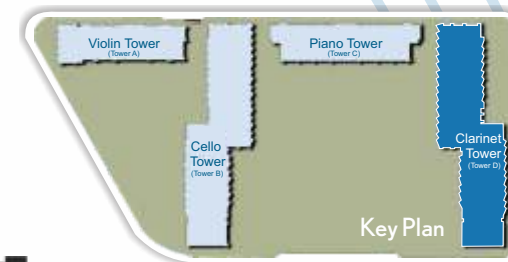




1-Bedroom Unit  
with Balcony B  
31.66 sqm. / 340.79 sqft.



Unit Components:  
Bedroom • Living / Dining Area • Kitchen • Toilet & Bath

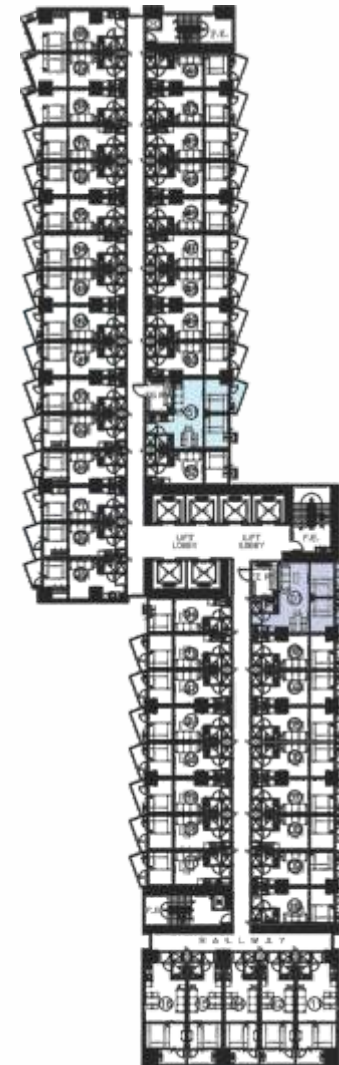




2-Bedroom Unit B  
46.72 sqm. / 502.89 sqft.

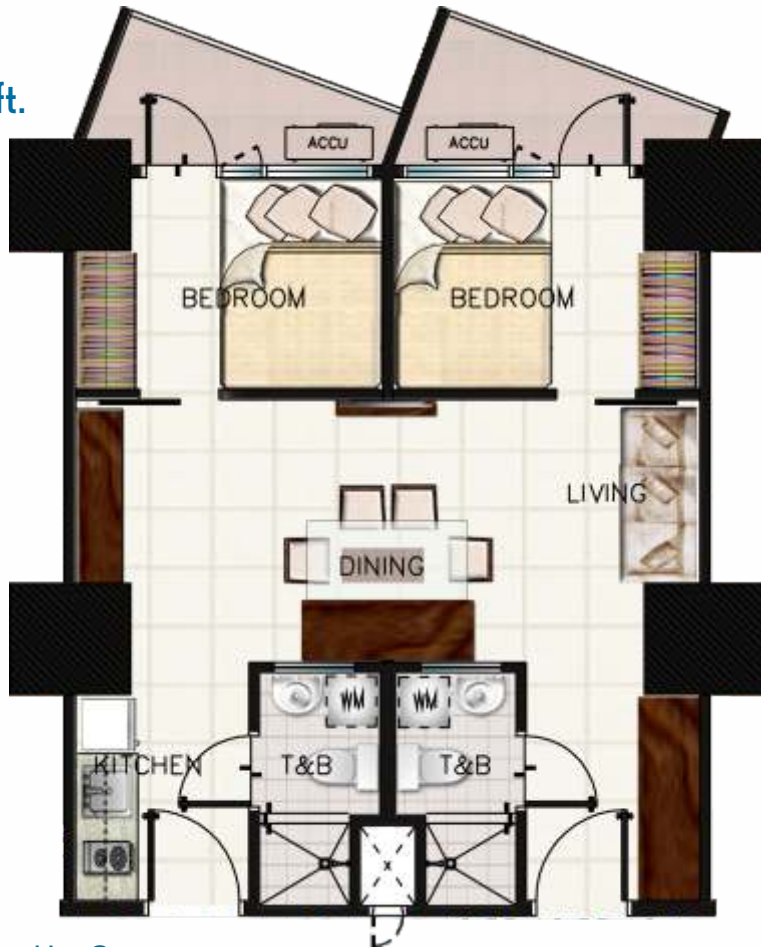


Unit Components:  
2 Bedrooms • Living Area • Dining Area • Kitchen • Toilet & Bath



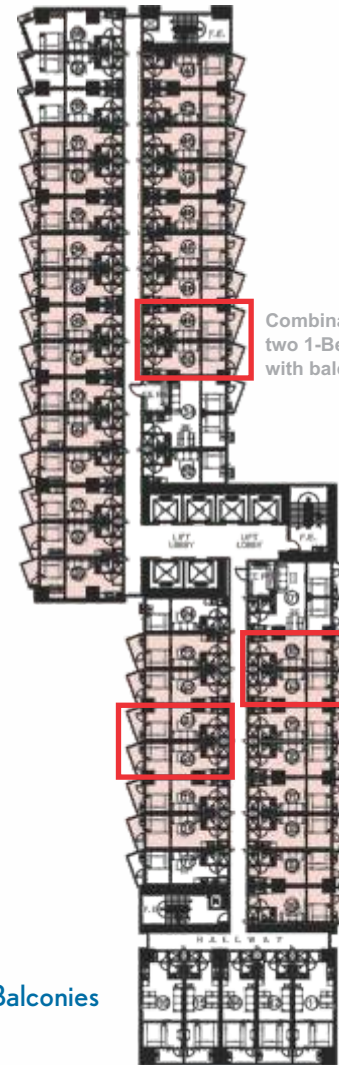
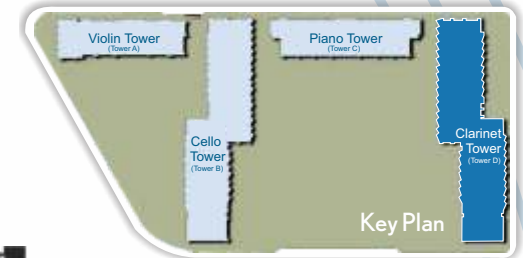


Combination A Unit  
53.62 sqm. / 576.87 sqft.



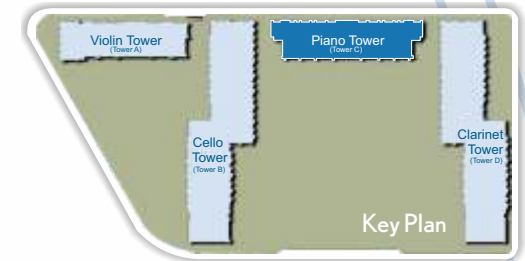
Unit Components:

2 Bedrooms • Living Area • Dining Area • Kitchen • 2 Toilets & Bath • 2 Balconies



Combination of  
two 1-Bedroom units  
with balcony

# Piano Tower (Tower C)



**LEGEND:**

- Studio Unit
- 1-Bedroom Unit with Balcony
- Studio Deluxe with Balcony
- Combination 1
- Regular Studio Unit
- Combination 2
- 1-Bedroom Unit

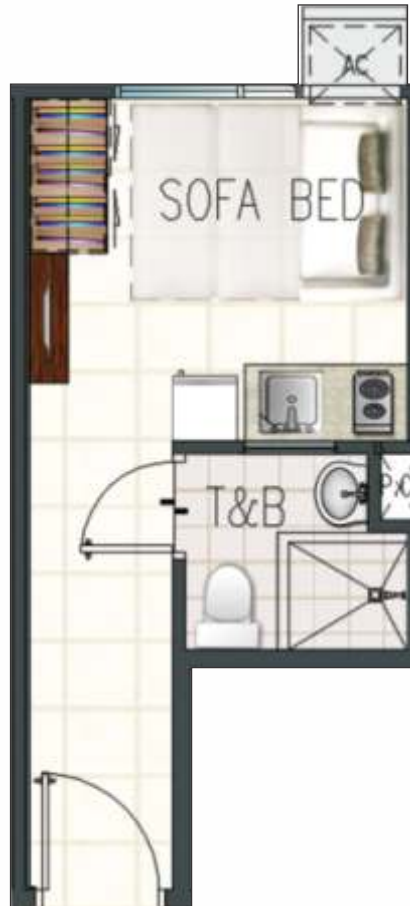


Typical Floor Plan

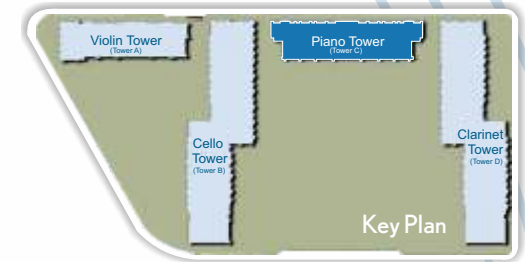




Studio Unit  
16.25 sqm. / 174.92 sqft.



Unit Components:  
Sleeping Area • Kitchen • Toilet & Bath

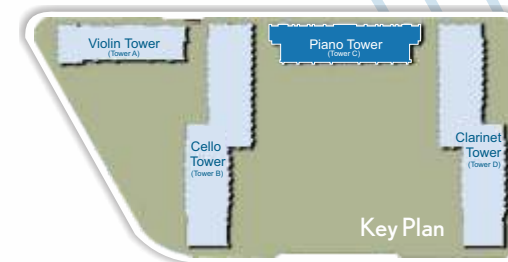




Regular Studio Unit  
20.32 sqm. / 218.72 sqft.



Unit Components:  
Sleeping Area • Dining Area • Kitchen • Toilet & Bath

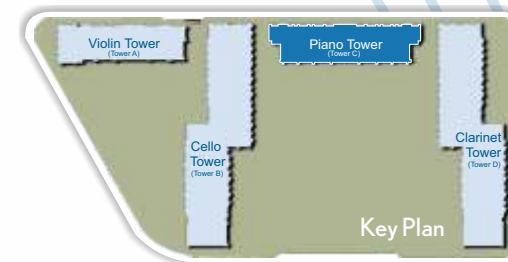




1-Bedroom Unit  
23.46 sqm. / 252.60 sqft.



Unit Components:  
Bedroom • Living / Dining Area • Kitchen • Toilet & Bath

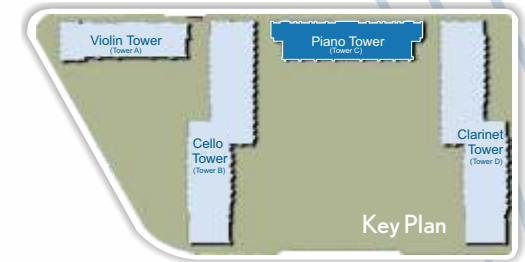




1-Bedroom Unit with Balcony  
27.36 sqm. / 294.58 sqft.



Unit Components:  
Bedroom • Living / Dining Area • Kitchen • Toilet & Bath • Balcony

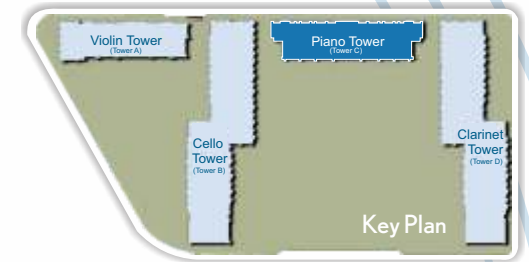




**1-Bedroom End Unit with Balcony**  
36.15 sqm. / 389.15 sqft.



**Unit Components:**  
Bedroom • Living / Dining Area • Kitchen • Toilet & Bath • Balcony



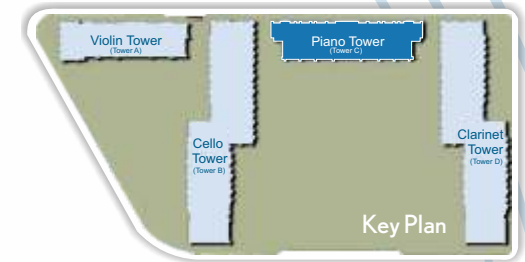


Combination A Unit  
50.83 sqm. / 546.85 sqft.

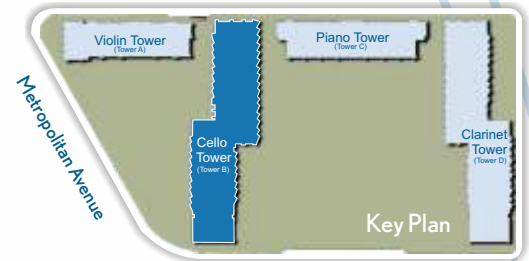


Unit Components:

2 Bedrooms • Living Area • Dining Area • Kitchen • 2 Toilets & Bath • Balcony



# Cello Tower (Tower B)








## Amenities



## Makati Skyline / Amenities

**LEGEND:**

-  1 Bedroom Unit
-  1 Bedroom End Unit
-  1 Bedroom Unit with Balcony
-  1 Bedroom End Unit with Balcony
-  2 Bedroom with Balcony



## Typical Floor Plan

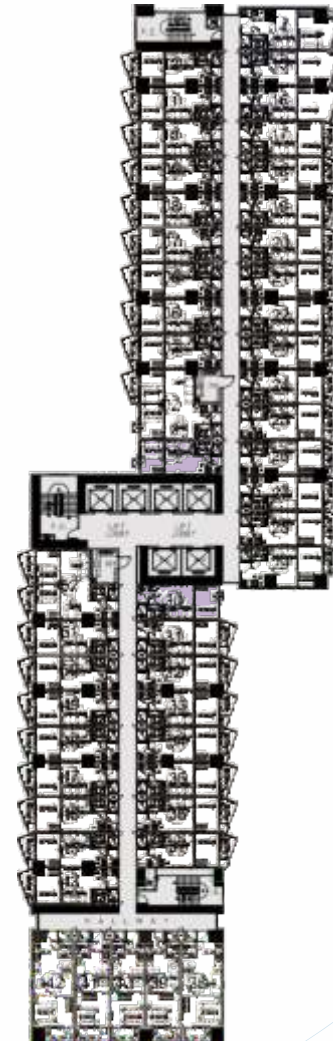
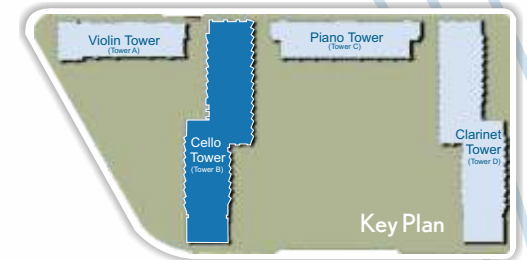
Makati Skyline



1-Bedroom End Unit  
23.84 sqm.



Unit Components:  
Bedroom • Living / Dining Area • Kitchen • Toilet & Bath



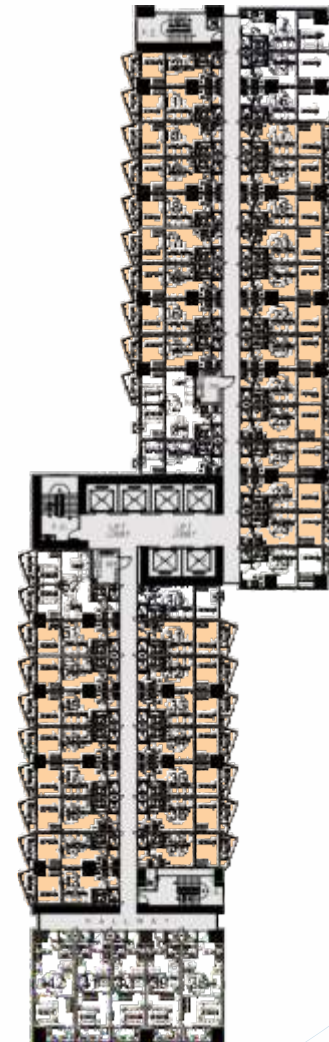
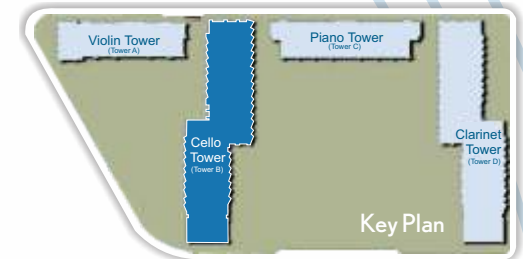




1-Bedroom Unit with Balcony  
26.81 sqm.



Unit Components:  
Bedroom • Living / Dining Area • Kitchen • Toilet & Bath

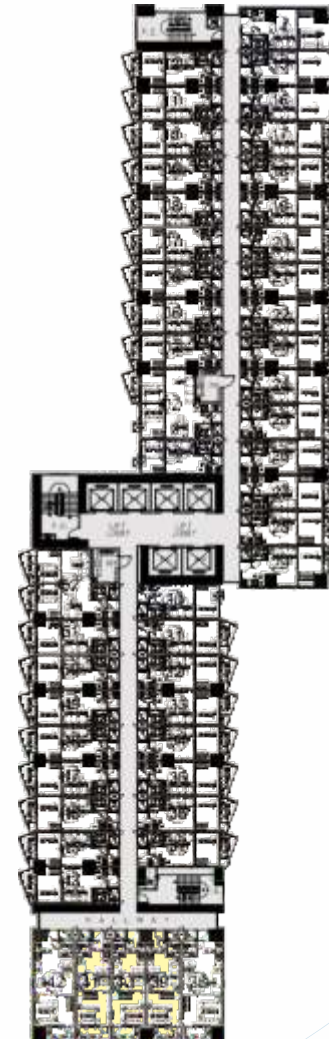
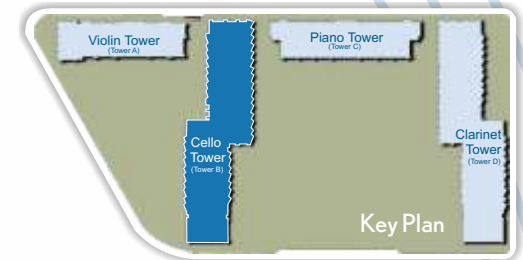




**1-Bedroom Unit with Balcony**  
31.66 sqm.



**Unit Components:**  
Bedroom • Living / Dining Area • Kitchen • Toilet & Bath





2-Bedroom Unit  
46.72 sqm.



Unit Components:  
Bedroom • Living / Dining Area • Kitchen • Toilet & Bath

